



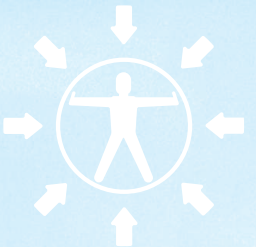
Swiss  
product



# RayGuard®



Protect Yourself on the Road,  
at Home and at Work



Against  
Electromog

[www.humanfirewall.com](http://www.humanfirewall.com)

Tested by official institutes and  
recommended by experts.



## Table of Contents

1. What is electrosmog?
2. Influence of electrosmog on the human body
3. A solution to electrosmog
4. Scientific studies
5. RayGuard® products

## 1. What is Electrosmog?

The term «electrosmog» is an artificial term, but has been stubbornly maintained to describe the environmental impact of electromagnetic fields. In the late 1970s, one began to systematically investigate the influence of the fields on humans and the environment.

The artificial word «smog», used in the description of these omnipresent fields, is a contraction of smoke and fog, sm(oke) + (f)og.

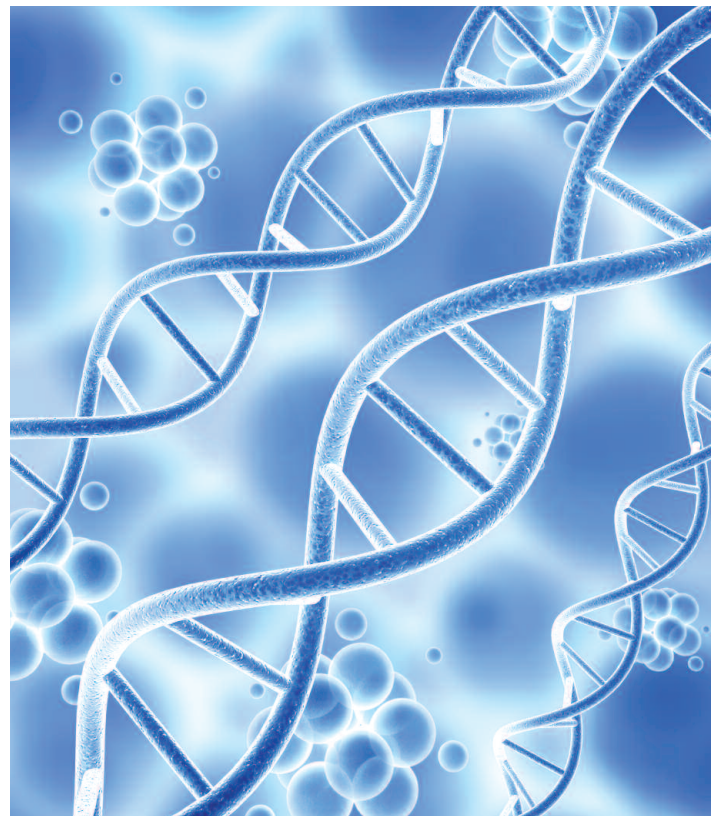
As opposed to the smog caused by air pollution, which we can smell and see, the presence of electromagnetic fields in our environment eludes direct perception. We are therefore forced to meet the emotionally laden discussion with reliable instruments, measuring methods and competent experts.

Electromagnetic waves such as the microwaves emitted by 4G / LTE, Wi-Fi, Bluetooth, power cables and electrical devices such as smartphones, smart TV, tablets, etc. belong to the group of non-ionizing radiation. These are waves whose energy is not sufficient to ionize other atoms, because the amount of energy is below the binding energy. These include in particular technically used frequencies in the field of radio waves and microwaves.

The effects of these waves on biological and therefore substances containing water (e.g. humans, which, depending on age and sex, consist of 50 to 80% water) are partly of a thermal (temperature increase as in the microwave oven) and partly of an athermal nature (disinformation, distress).

For mobile and wireless data traffic, the frequencies are currently mostly in the gigahertz range between 900 MHz and 3 GHz and are thus microwaves (a microwave oven generates electromagnetic waves of up to 2.45 GHz = 2,450 MHz). However, the signals are not transmitted as continuous waves during mobile telephony, but are usually also pulsed and therefore have a higher performance.

Moreover, the biological window in which the human body works is also in the range of 2.45 GHz. This means that mobile frequencies and biological window collide, causing a disturbance in the human body.







## 2. Effect of Electrosmog on the Human Body

In our civilisation, electrosmog and radiosmog play a big role. They have come to stay and are steadily increasing.

Scientific studies have proved the stressing effect of radiation, mainly focused on the weak points in our body. Due to the high resonance capacity of the human being, we act like an antenna for microwaves and rays.

### The resonance capacity of the human body:

GHz (gigahertz) =  $\mu\text{m}$  waves = DNS  
MHz (megahertz) = mm-waves = cells  
KHz (kilohertz) = cm-waves = centimeter large structures

If the optimum state of the human body is disturbed by these electromagnetic waves, the control commands of the brain may no longer be forwarded properly. Outright malfunctions may even occur. Malfunctions in the cell metabolism can take place, resulting in organ deficiencies and, with long-term influence, changes to the tissue. The body gets sick. The otherwise automatic regulation may be severely disrupted by the influence of electromagnetic radiation.

Body parts such as the brain (especially the pineal gland), eyes, hearing, genital glands are very sensitive and can suffer considerable damage due to electrosmog. Other parts of the body and organs also suffer from prolonged radiation. More and more signs indicating radiation overload appear.

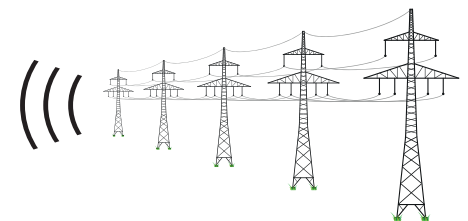
### Possible symptoms:

- Fatigue
- Headache
- Tinnitus
- Brain tumor
- Alzheimer's disease
- Sleep disorder
- Hypertension
- Heart attack
- Stroke
- Digestive problems
- Blood clots (rouleaux formation)
- Diabetes
- Allergies
- Nervousness
- Circulatory disorders
- Faster growth of existing cancer cells
- Malfunction of female and male reproductive organs



### Blood-Brain Barrier

- Increased permeability for waste products to the brain
- Alzheimer's, dementia
- Depressions
- Cognitive impairment
- Attention Deficit Disorder (ADD)

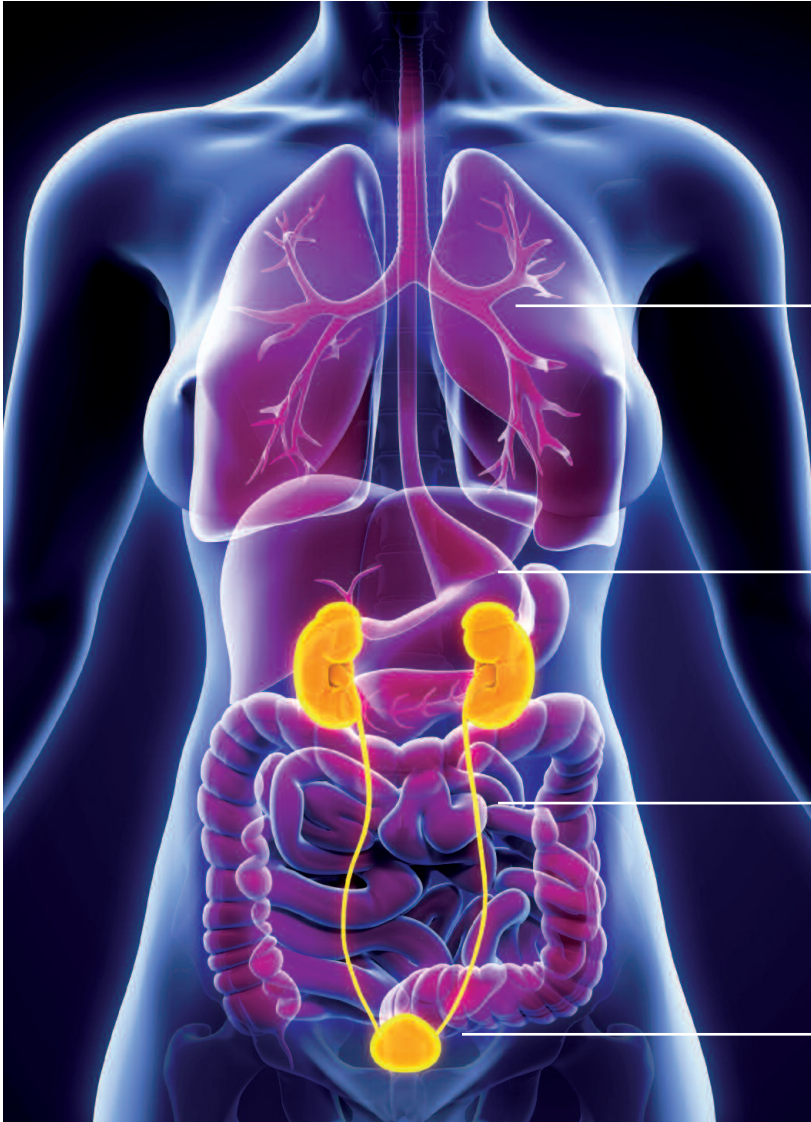


### Pineal Gland

- Impaired melatonin production
- Weakened immune system
- Sleep disorder, fatigue

### Pituitary Gland

- Increased stimulation of the adrenal cortex
- Increased secretion of the stress hormone cortisol



**Possible consequences  
by electrosmog:**

**Heart and Blood**

- Hypertension
- Heart attack / Stroke
- Arteriosclerosis
- Diabetes

**Digestive System**

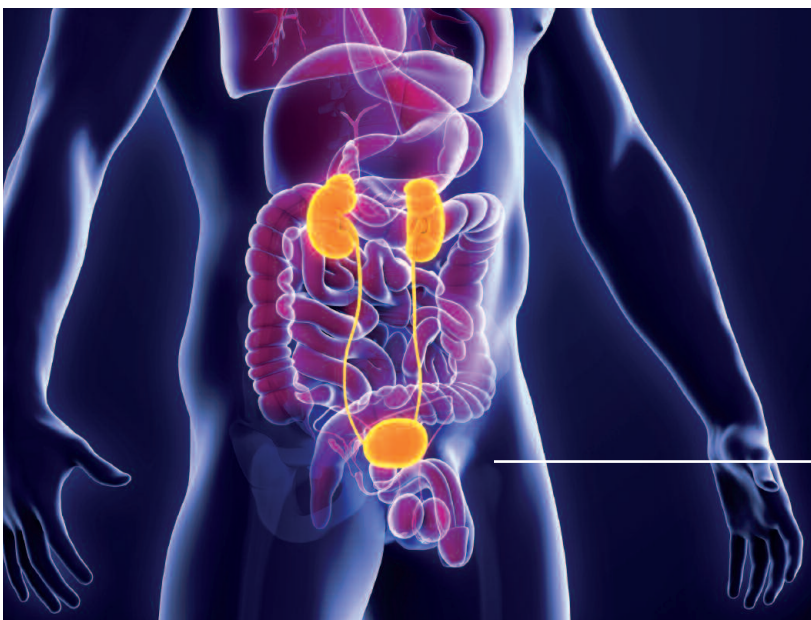
- Chronic heartburn
- Acid reflux
- Esophagus cancer
- Flatulence
- Constipation

**Stress Hormones**

- Increased release of adrenalin in the adrenal cortex

**Male Reproductive Organs**

- Reduced blood circulation
- Impeded nidation of fertilized eggs
- Infertility
- Miscarriages



**Male Reproductive Organs**

- Impotency
- Erection problems
- Reduced sperm production



## The Blood-Brain Barrier

The blood-brain barrier is a physiological barrier in the brain between the bloodstream and the central nervous system (CNS). It protects the brain from pathogens circulating in the blood such as toxins, bacteria and viruses. The blood-brain barrier is a highly selective filter that feeds the nutrients needed by the brain and dissipates the metabolic waste products that have been created.

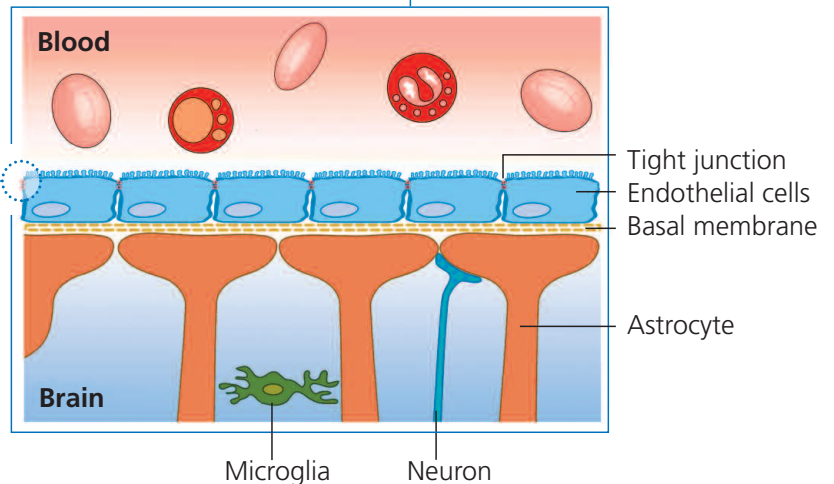
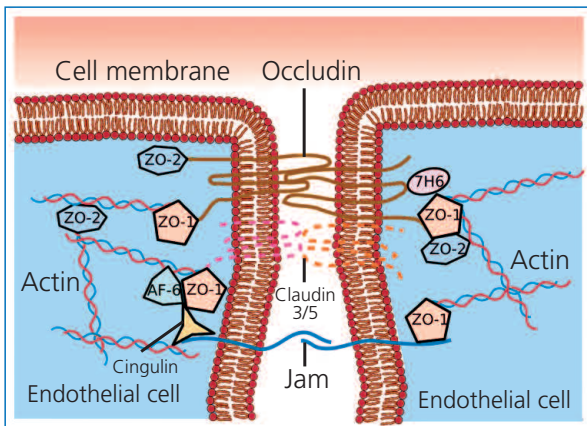
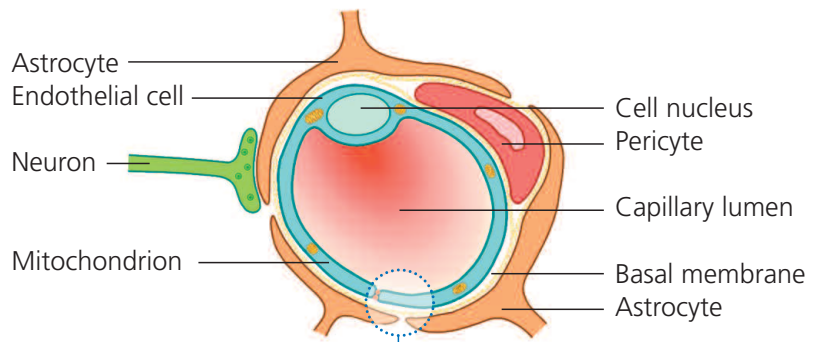
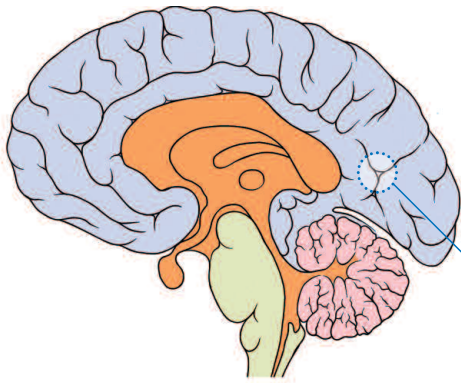
Its function is to maintain the milieu conditions in the brain and to distinguish them from those of the blood. Endothelial cells, astrocytes, pericytes as well as the tight junction are the essential part of this barrier.

If we are exposed unprotected to microwaves, a reduction of conductance and energy takes place and after a short time the shielding against pollutants in the blood is broken. The blood-brain barrier is open and our brain is freely accessible to toxins, bacteria and viruses found

in the blood. In the brain itself there is no defense mechanism. This can have fatal consequences.

The blood-brain barrier is not yet fully developed in newborns and adolescents before 14 or 15 years of age. For these the danger of triggering damage to the brain as a result of additional stimuli, such as from microwave radiation, is increased many times.

Baby monitors or smartphones with a baby monitor apps should not be positioned in the immediate vicinity of the toddler. Studies have shown that in infants and young children, the blood-brain barrier is already opened after 2 minutes of direct cell phone radiation.





### 3. A Solution against Electrosmog

#### RayGuard® – the Human Firewall

RayGuard® is a «human firewall» that can protect and strengthen us against many negative side effects of our modern lifestyle. Ancient knowledge about the enormous potency of plants, minerals, metals and the technical know-how of RayGuard® form the basis for the production and distribution of the RayGuard® products. The minerals and metals are finely ground and combined in specific proportions.

RayGuard® products have been amongst the most innovative of its kind on the market for more than 20 years.

#### Properties of RayGuard®:

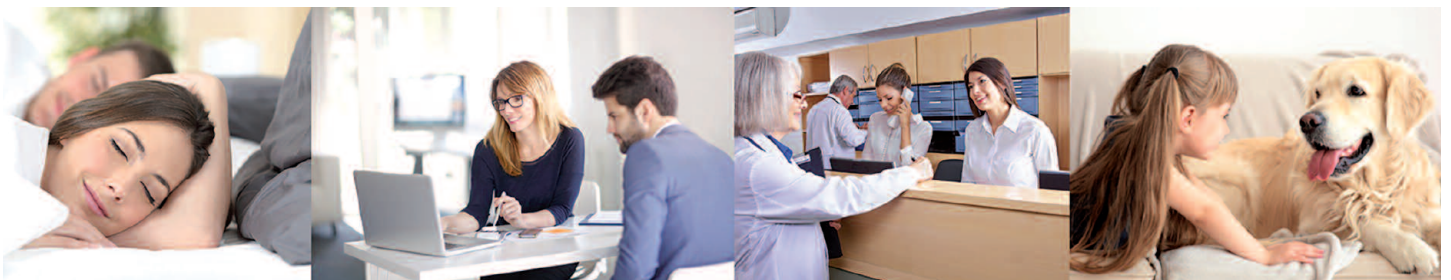
- RayGuard® harmonizes a large portion of the harmful radiation through the proven natural vibrations of several different minerals.
- By harmonizing non-ionizing radiation, the risk of opening the blood-brain barrier can be reduced.
- RayGuard® strengthens the meridians (energy paths) in the human body through the physical power of the mineral rocks and crystals, thus protecting them against external influences, such as electrosmog, and stabilizing the immune system.
- The effect of RayGuard® contributes to relaxation and well-being.
- RayGuard® can contribute to a healthy and restful sleep, as evidenced by numerous testimonials. Science defines sleep as a periodically occurring state of diminished susceptibility to external stimuli. Sensitivity to the environment is reduced. One processes experiences in the sleep and the body regenerates itself. Sleep is recreation. But what happens when the sleep is disturbed by external stimuli and it is a permanent condition? Research has shown that sleep deprivation over an extended period of time has a negative effect on the human organism and its functions.

#### Sleep problems can be the cause of the following problems:

- Irritability
- Aggression
- Poor concentration
- Declining Libido
- Hypertension
- Many toilet visits at night
- Micro-sleeps and daily fatigue

#### RayGuard® is suitable for both private and commercial purposes:

- RayGuard® is an enrichment for every bedroom and living room.
- RayGuard® is ideal for offices, exhibition and meeting rooms.
- RayGuard® creates a calming atmosphere in waiting rooms (doctors, therapists, lawyers).





## 4. Scientific Studies

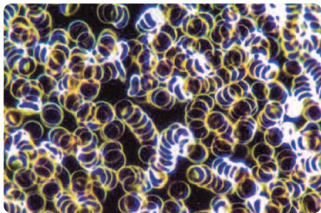
### Dark-Field Microscopy

Dark-field tests by experimental therapist Heinz Meier from Oberbühren, Switzerland

In several patients of the practice it was observed that their red blood cells were clumping together ("rouleau formation") when the person was exposed to EMF (electromagnetic fields). This effect was reversed when the body was in contact with the RayGuard® RayChip, even when exposed to further EMF.

#### Test no. 1:

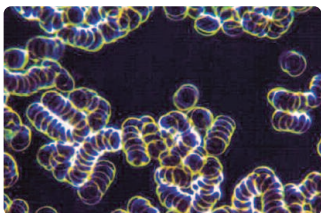
Blood samples were taken from the test persons after one hour without contact with a mobile phone or laptop.



The blood looks normal. The erythrocytes (red blood cells) are active and in motion.

#### Test no. 2:

Blood samples were taken from the test persons after they had phoned with a mobile phone for about 3 minutes.

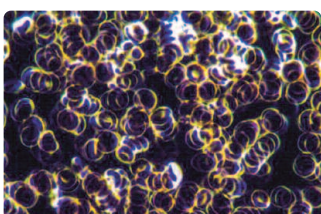


The blood has changed dramatically. The erythrocytes contracted in so-called «rouleaux formations» and stuck together. A normal blood flow is no longer guaranteed.

There are complications arising in the organs as they can no longer be adequately supplied with blood.

#### Test no. 3:

Blood samples were taken from the test persons after they had phoned for about 3 minutes with the RayGuard® RayChip on the mobile phone.



The blood looks again almost normal. The erythrocytes are no longer glued together and are in motion again.

### Aschoff-Test

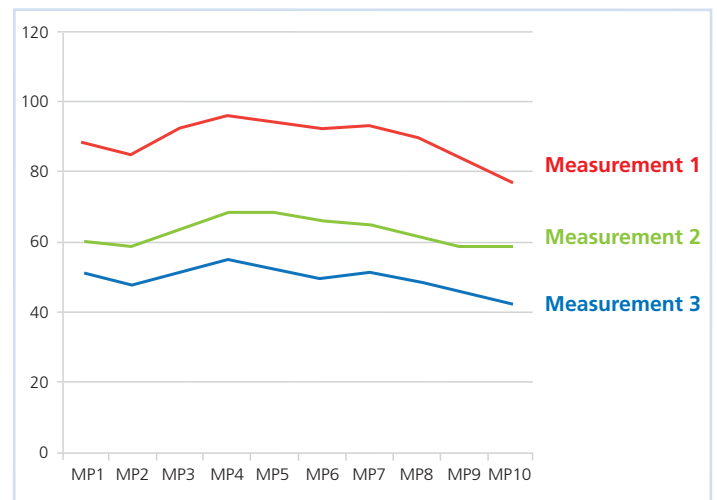
LIFE-TESTinstitut Ulrich Arnd, Mundingen, Switzerland

Measurements were made with the Aschoff Test. During phone calls with a mobile phone, skin resistances increase significantly (from an average of 50 kΩ to 90 kΩ) and then drop again in the course of several hours after the end of the phone call. After applying a RayGuard® RayChip on the mobile phone, this increase was reduced by about 2/3.

#### Info Graphic:

Meridian measurements as per Aschoff Test, average values for 10 test persons using the RayGuard® RayChip:

- horizontal: measuring points 1 to 10
- vertical: the skin resistance in kilo ohms (kΩ)\*



**Measurement 1:** initial values

**Measurement 2:** there is heavy stress during the mobile phone call.

**Measurement 3:** during mobile phone call, but with the RayGuard® RayChip mounted, the stress is reduced by approximately 67%.

\*The ideal value for a healthy adult is 40 kΩ.

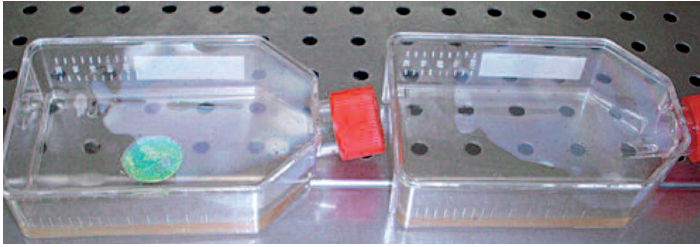


## In Vitro Examinations of Cell Cultures

Prof. F. Marinelli, Researcher at IGM-CNR Bologna, Italy

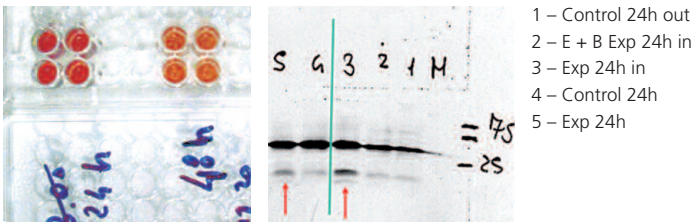
In 2011, the IARC (International Agency for Research on Cancer) classified radio frequency as being potentially carcinogenic for humans.

An experimental study was carried out on the mobile badge by RayGuard® in order to determine if it can protect cells from the biological impact of EMF.



## Material and Methods

A CCRF-CEM cell culture that is used in many experiments on the effects of radiation (bibliography) was subjected to radiation from a device that emits 900 MGz for 24 hours.



## Cell cultures in the magnetic field:

Cell cultures of normal lymphocytes as well as lymphoblastoid tumor cells were exposed to an electromagnetic field. After 2, 24 and 48 hours investigations were carried using cell proliferation testing and cytofluorimetric flow analysis. After 24 and 48 hours significant changes (in contrast to control cell cultures) were observed in both test procedures. These did not take place in the presence of a RayGuard® RayChip.

The author of the study assumes that the genotoxic effect of the EMF leading to the increase in proliferation is neutralized by the RayGuard® RayChip.

## Energy Medical Results

Dr. med. Manfred Doepp, nuclear physician

The investigated RayGuard® RayChip effect an improvement of the energy-medical criteria «energy, function status and sol-gel state». The results are statistically significant to highly significant.

Energetic increases take place when the RayGuard® Ray-Chip is applied to palm of the left hand. In contact with the so-called thymus point (upper sternum), the informational effects are more pronounced.

Phone calls with the mobile phone without RayGuard® Ray Chip on the ear reduce organ functions and cause a «jelly tendency» in the mesenchyme (viscosity increase in active connective tissue or matrix). With the RayGuard® RayChip on the mobile phone, these biological effects are not only neutralized, but converted into positive effects.

As a result of the significance of this study, the RayGuard® RayChip can thus be attributed a biologic-energetic-informative effect using the energy-medical methods of «Prognos® and Amsat».

## 5. RayGuard® Products

### RayGuard® RayChip



RayGuard® RayChip makes smartphones, tablets, computers, etc. less harmful! Simply stick it on the selected device.

Smartphone, cordless telephone (DECT): 1 RayChip  
Computer, laptop, tablet: 2 RayChips  
Plasma or Smart TV: 4 RayChips

Size: Ø 30 mm

#### Contents 2 RayChips Set:

1 RayChip black  
1 RayChip silver

#### Contents 5 RayChips Set:

1 RayChip green  
1 RayChip blue  
1 RayChip red  
1 RayChip black  
1 RayChip silver

Set Price 29,00 €

Set Price 59,00 €

### RayGuard® Pendant «Flower of Life»



The RayGuard® Pendant «Flower of Life» can harmonize different influences with the help of minerals. Less impact of electrosmog. For your well-being.

RayGuard® Pendant «Flower of Life» is available in 6 different colors. The back of all pendants have the same colors (rainbow).

Size: Ø 30 mm

#### Contents:

1 RayGuard® Pendant «Flower of Life» (always specify the desired color when ordering).

Price 39,00 €

### RayGuard® Swiss Stone Pine Oil

RayGuard® Swiss Stone Pine Oil is suitable for refilling the RayGuard® Swiss pine **energy** plus. The soothing fragrance of the pine pleasantly refreshes your living room or work space.

#### Produced naturally of:

- twigs, needles, cones
- 100% pure unadulterated pine aroma
- pure essential oil
- water vapor distillate

Available in 20 ml bottles.

Price 24,90 €



### RayGuard® Body & Car



RayGuard® Body & Car – as a pendant or key fob.

- at work (computer, monitor, smartphone, cordless telephone (DECT), WLAN, Wi-Fi, 4g/LTE, etc.).
- in the car and at home (smart TV, smartphone, digital system, WLAN, Wi-Fi, 4g/LTE, kitchen appliances, hair dryer, shaver, electrical wiring and high voltage lines, etc).
- in hospitals (intensive care units, radiological facilities).
- in airplane.

Color: blue

Efficiency range: up to 1 meters

Dimensions: L 58 x W 36 x H 12 mm

#### Contents:

1 RayGuard® Body & Car

Price 129,00 €

### RayGuard® Mobil



RayGuard® Mobile for on the road, on holiday or at work.

- is used to protect against electromagnetic radiation and is designed for mobile use.

Color: blue

Efficiency range: up to 2 meters

Dimensions: L 126 x W 54 x H 12 mm

#### Contents:

1 RayGuard® Mobil

Price 169,00 €

### RayGuard® Dome Wood



For residential, work and office areas.

Material: wood

Efficiency range: up to 7 meters

Dimensions: Ø 180 x H 100 mm

#### Contents:

1 RayGuard® Dome Wood

Price 690,00 €

### RayGuard® Dome Swiss Pine



For residential, work and office areas.

Material: Swiss pine wood  
 Efficiency range: up to 7 meters  
 Dimensions: Ø 180 x H 100 mm

**Contents:**

1 RayGuard® Dome Swiss pine

**Price 690,00 €**

### RayGuard® Dome Walnut



For residential, work and office areas.

Material: nutwood  
 Efficiency range: up to 7 meters  
 Dimensions: Ø 180 x H 100 mm

**Contents:**

1 RayGuard® Dome Walnut

**Price 790,00 €**

### RayGuard® Home



For residential, work and office areas.

Material: plastic material  
 Color: black/gold  
 Efficiency range: up to 15 meters  
 Dimensions: Ø 250 x H 130 mm

**Contents:**

1 RayGuard® Home

**Price 790,00 €**

### RayGuard® Home Wood



For residential, work and office areas.

Material: wood  
 Efficiency range: up to 15 meters  
 Dimensions: Ø 250 x H 130 mm

**Contents:**

1 RayGuard® Home Wood

**Price 890,00 €**

### RayGuard® Home Swiss Pine



For residential, work and office areas.

Material: Swiss pine wood  
 Efficiency range: up to 15 meters  
 Dimensions: Ø 250 x H 130 mm

**Contents:**

1 RayGuard® Home Swiss pine

**Price 890,00 €**

### RayGuard® Swiss pine energy plus Set



- is an enhancement for any bedroom or living room
- is ideal for office, exhibition and meeting rooms.
- creates a soothing effect in waiting rooms (doctors, therapists, lawyers).
- has a calming effect on pets (dogs, cats).

Material: Swiss pine wood  
 Efficiency range: 5 meters  
 Dimensions: L 190 x W 120 x H 60 mm

**Contents:**

1 RayGuard® Swiss pine energy plus  
 1 RayGuard® Swiss stone pine oil  
 1 pipette for refilling

**Set price: 490,00 €**

The RayGuard® products are not medical products and therefore not intended as therapy for diseases or for treating complaints or discomfort. If you are sick, please consult a physician. Our recommendations and statements are not a substitute for medical advice and treatment.





Swiss  
product



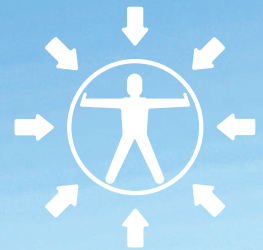
# RayGuard®



## Important

One can still detect electromagnetic fields with conventional measuring methods in the effective range of the RayGuard® products. The functionality and effect, however, can be reproduced directly on the human body with e.g. with electro-acupuncture measurements according to Dr. Voll, with the Prognos-Meridian Diagnosis or the Computer-Decoder-Demography. Reactions, as well known in homeopathy, may occur.

**Information:** [www.myhumanfirewall.com](http://www.myhumanfirewall.com)



Brought to you by:

Tested by official institutes and recommended by experts.